



Lakün goes beyond time,
Excellence without compromise.



WELCOME	04-05
LOCATION	06-09
THE PROJECT	10-27
AMENITIES	28-39
SUSTAINABILITY	40-43
TIPOLOGIES.....	44-65
ABOUT	66-67

Index



WELCOME

The REAL “QUIET” LUXURY

Transcendence. Timelessness. Distinction.

Lakün is an immersion into the sophistication of the Costa del Sol that transcends standards, a space where elegance is redefined towards subtlety and quality.

Chosen as an exclusive location to enjoy a top-tier residential experience, Lakün combines cutting-edge architecture with meticulous attention to detail, offering a haven of comfort at the foot of the Mediterranean.



FUENGIROLA • MIJAS

MEDITERRANEAN *Essence*

Lakün is strategically located between the coastal towns of Fuengirola and Mijas.

Fuengirola boasts a privileged environment due to its beauty and mild climate throughout the year. Its sea stretches along the coast with 8 kilometers of beaches that have been awarded the Blue Flag distinction, a recognition of the quality of its waters and its soft golden sand. The city also offers experiences to get lost in its streets, a vibrant social life, numerous sunsets, and a wide variety of nightlife.

Mijas, with its picturesque cobbled streets and rich cultural heritage, complements the urban richness of Fuengirola and its diverse gastronomic offerings, which captivate both locals and visitors.

1 min
*to the A-7
highway.*

5 min
to the beach

5 min
*to the commuter
train*

20 min
to the airport

25 min
to Marbella

25 min
to Málaga

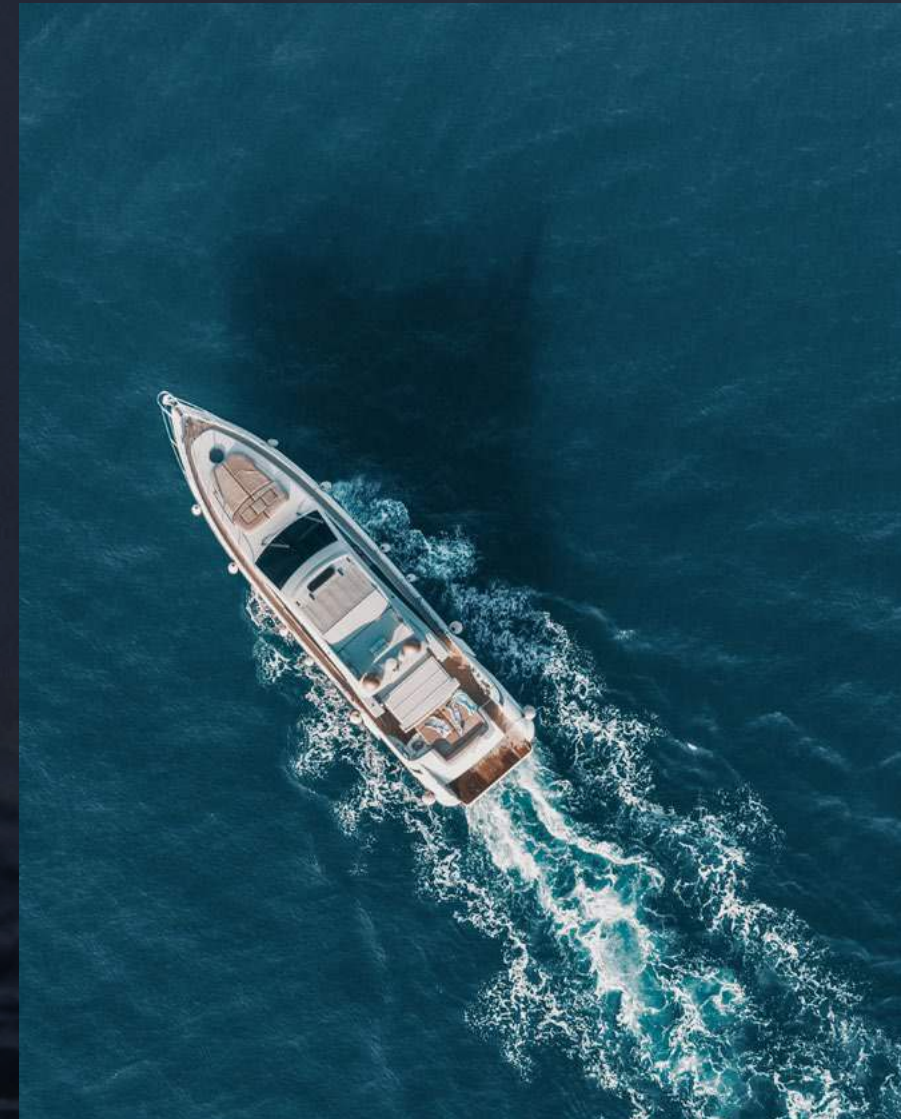
COSTA DEL SOL

An OPEN PLACE to the WORLD

Lakün is strategically located less than half an hour from both Marbella and Málaga, two cities that share a cosmopolitan atmosphere where you can enjoy the sun, the beach, and the gastronomy, offering residents of the area a perfect blend of relaxed lifestyle and sophistication.

But these two cities are much more. Málaga, a dynamic city steeped in history and culture, captivates its visitors with gems like the Alcazaba, the imposing Cathedral, the Picasso Museum, or the Centre Pompidou.

Meanwhile, Marbella, with its luxurious enclave in Puerto Banús, adds a touch of elegance and style to the unique experience that Lakün offers.



Beyond its historical and cultural splendor, Málaga is establishing itself as an emerging technological hub in Spain and Europe, driving the city's constant evolution.

Its average of 320 sunny days a year and more than 70 golf courses make the city a chosen spot for a large number of athletes and golf enthusiasts.

Thanks to its location, it is a global connection point where Málaga-Costa del Sol Airport plays a crucial role, with more than 130 direct flights to various world destinations, making Málaga a unique city connected with cities around the world.

NEXT LEVEL

URBAN LIFE *Resort*

Lakün rises with impeccable architecture in a serene and captivating setting. Its sophisticated charm is revealed in its distinctive terraces, which become wings extended toward the horizon, combined with elegant windows that bathe each room in the warm light of the Mediterranean sun.





PREMIUM DESIGN

ARQUITECTURE

Bakpak Architects is a studio specialized in exploring new models and expressions of architecture, Solving formal and circumstantial restriction with elegance.

This approach requires them to consider the emotional, cultural, and social influence of architectural design, with the intention of transgressing and transcending with their legacy to future generations through architecture that connects with people.

bakpak
ARCHITECTS
arquitectura desplegada

[VISIT WEBSITE](#)

DTR Studio is an architecture firm recognized for its focus on sustainability and the harmonious integration of each project into its natural and urban context. Specializing in architecture that merges aesthetics, functionality, and environmental responsibility, DTR Studio stands out for its emphasis on sustainability, contemporary aesthetics, and functionality, achieving award-winning projects.

 **DTR_studio**
arquitectos

[VISIT WEBSITE](#)

PREMIUM DESIGN

INTERIOR design

HMY Consulting & Design is a studio and manufacturer specialized in the hospitality sector, creating functional and welcoming spaces designed to adapt to the needs and lifestyle of its users. Every detail is carefully planned and executed, promoting comfort and well-being. The combination of functionality and style offers a perfect balance between aesthetics and practicality. Thanks to its industrial capacity and focus on research and development of materials and solutions, HMY guarantees durable and sustainable designs that are both attractive and environmentally responsible.



[VISIT WEBSITE](#)





SPACIOUS TERRACES

OUTDOOR *paradise*

The spacious terraces of Lakün offer a private oasis to enjoy with family and friends, where the horizon becomes a daily work of art. Here, you can relax in an environment that combines natural beauty with the elegance of cutting-edge architecture. With wide space to create your own outdoor paradise, each terrace is an invitation to enjoy unforgettable moments, from peaceful sunrises to evenings under the stars.



Lakun offers interior spaces designed to promote comfort. Each of its details reaffirms the values it identifies with: elegance, quality, and exclusivity.

HOUSING TYPOLOGIES

233 Residences

01
bed *Urban Living*
Residences up to 59 m²
Terraces up to 32 m²

1,5
bed *Flex Living*
Residences up to 83 m²
Terraces up to 60 m²

02
bed *Elite Space*
Residences up to 126 m²
Terraces up to 97 m²

03
bed *Grand Space*
Residences up to 145 m²
Terraces up to 100 m²

3,5
bed *Flex Grand Space*
Residences up to 185 m²
Terraces up to 114 m²

03
bed *Grand Penthouse*
Residences up to 187 m²
Terraces up to 203 m²

4,5
bed *Grand Penthouse*
Residences up to 214 m²
Terraces up to 247 m²





LAKUN'S ESSENCE

A REFLECTION of your IDENTITY

At Lakün, each terrace is transformed into a personal and versatile setting, where luxury and comfort meet to create unforgettable moments. Designed for outdoor living, the terraces offer ample spaces where you can relax in a private solarium, cool off in an exclusive pool or enjoy a social area with barbecue, ideal for sharing with friends and family. In every detail, the terraces of Lakün allow the outdoors to be an extension of your home, adapting to your lifestyle and creating the perfect environment for every occasion.



PREMIUM DESIGN

The LUXURY of SPACE

The space and interior design of these residences are a true work of art, where every detail has been meticulously selected to create an atmosphere of elegance, light, and comfort. From the highest quality materials to the impeccable finishes, each space reflects a perfect balance between functionality and aesthetics. The harmony in the design is perceived in every corner, offering a living experience that is both sophisticated and welcoming.



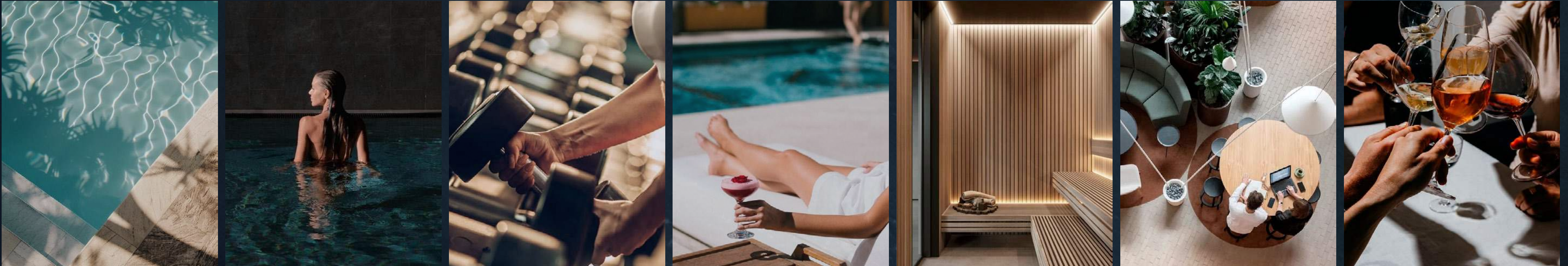
PREMIUM DESIGN

DESIGN in every DETAIL

The interior design at Lakün is a showcase of style and spaciousness, where every element has been precisely chosen to bring to life an environment of maximum elegance and comfort. The large living room spaces open up to welcome natural light, creating a cozy and sophisticated atmosphere. The kitchen, equipped with the highest quality materials and impeccable finishes, is both a functional space and an aesthetic jewel, ideal for enjoying family moments. Additionally, the office area allows for a perfect balance between productivity and serenity, adapting to a dynamic lifestyle. Every corner has been designed to offer a living experience that combines the luxury and warmth of a home thoughtfully crafted in every detail.

EXCLUSIVE AMENITIES

THE PRIVILEGE *of* LIVING *like* IN A HOTEL



Lakūn offers a range of leisure and comfort opportunities where relaxation intertwines with pleasure. These carefully designed amenities provide a hotel resort experience from the comfort of home.

Entering the Lakūn experience means immersing yourself in the serenity of a spa, enjoying refreshing moments in its three pools, finding inspiration in its coworking and meeting area, training and unwinding in the fitness zone, and enjoying with family and friends in the event space.



RELAX SPACE

Tranquility

The Lakün experience is fully enjoyed in its outdoor pools, an oasis of calm under the warm Mediterranean sun. Meanwhile, in the solarium, the golden glow of the sun touches every corner, elevating the experience to the next level. In the skypool area, the atmosphere is filled with magic among friends, a space that invites you to create unforgettable memories with your loved ones.



CARE SPACE

Senses

The 'Care' area of Lakün is the perfect enclave to discover well-being, with a meticulously equipped spa to achieve the highest level of relaxation and personal care. Lakün offers a comprehensive experience that balances body, mind, and spirit.



CO-WORKING SPACE

Inspiration

Lakün offers a co-working space, video conferencing, and meeting areas with all the amenities and services needed to carry out your professional activities.

Equipped with high-speed internet access, conference rooms, and meeting areas, the co-working zone becomes a space where, in addition to working, you can network and create professional synergies in a modern and dynamic environment.

FITNESS SPACE

Wellness

Lakūn offers a space dedicated to promoting an active and healthy lifestyle.

With a modern and fully equipped gym area featuring the latest trends in fitness equipment, it becomes a personal training center for its residents. It allows you to keep your body in shape while enjoying the privilege of top-notch facilities, making every day an opportunity to take care of yourself and stay fit.





MULTIPURPOSE SPACE

SOCIAL *events*

An exclusive space designed to adapt to your needs. Versatile and elegant, it is designed to host a wide variety of activities, from private meetings, social events, children's birthdays, and a cinema room to collaborative work sessions. Designed in harmony with the environment, this multifunctional room offers an ideal place for residents to enjoy their time in a setting that balances functionality and comfort. A space that elevates your lifestyle, adapting to every personal and social occasion with complete flexibility.



COMMITMENT

LIVING LOOKING *to the* FUTURE

We are firmly committed to environmental preservation and have a future-oriented vision. We implement advanced systems to reduce our carbon footprint and promote a sustainable environment.

We aspire to create a home that not only meets current needs but also contributes to the long-term well-being of people and the care of the planet. With an innovative approach and eco-friendly technologies, we are building not just homes, but a more sustainable future for everyone.



ENERGY EFFICIENCY

ENERGY RATING A

We work according to the highest standards in areas such as environmental protection and smart energy consumption. Lakün has an 'A' energy rating.



Innovative lightweight facade system with high resistance and excellent thermal performance.



Carpentry with thermal break and Climait glass.



Low consumption and high efficiency equipment and appliances.



High energy efficiency heat pump for DHW (domestic hot water).



Photovoltaic solar panels.

↓ 87,53%

LAKÜN reduces energy consumption.

↓ 87,76%

LAKÜN reduces CO2 emissions.

**Calculations according to the energy efficiency table comparing with the average value of energy rating E.*



A | Carbon Dioxide Emissions below 10 Kg of CO2/m2/year

A | Energy Consumption below 44.6 kWh/m2/year





TIPOLOGIES

A RESIDENTIAL *community style for every* LIFESTYLE



T Y P O L O G I E S

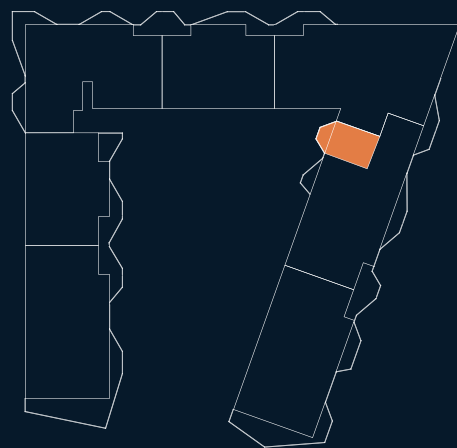
01
bed

URBAN Living

S U R F A C E S

Built area 53,72 m²
Built terrace area 11,07 m²

Total built area 64,79 m²



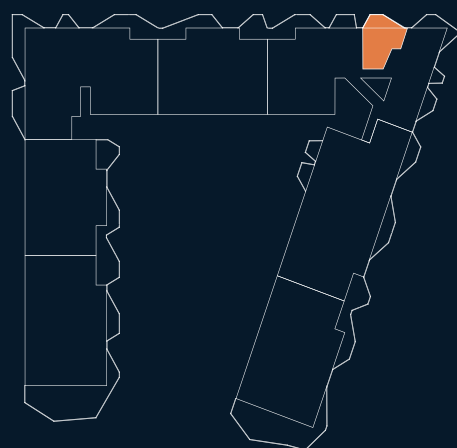
T Y P O L O G I E S

01 bed URBAN Living

S U R F A C E S

Built area 57,08 m²
Built terrace area 13,53 m²

Total built area 70,61 m²





T Y P O L O G I E S

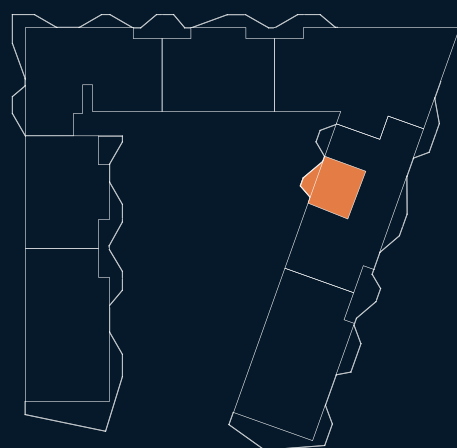
1,5
bed

FLEX Living

S U R F A C E S

Built area 76,43 m²
Built terrace area 11, 28 m²

Total built area 97,71 m²





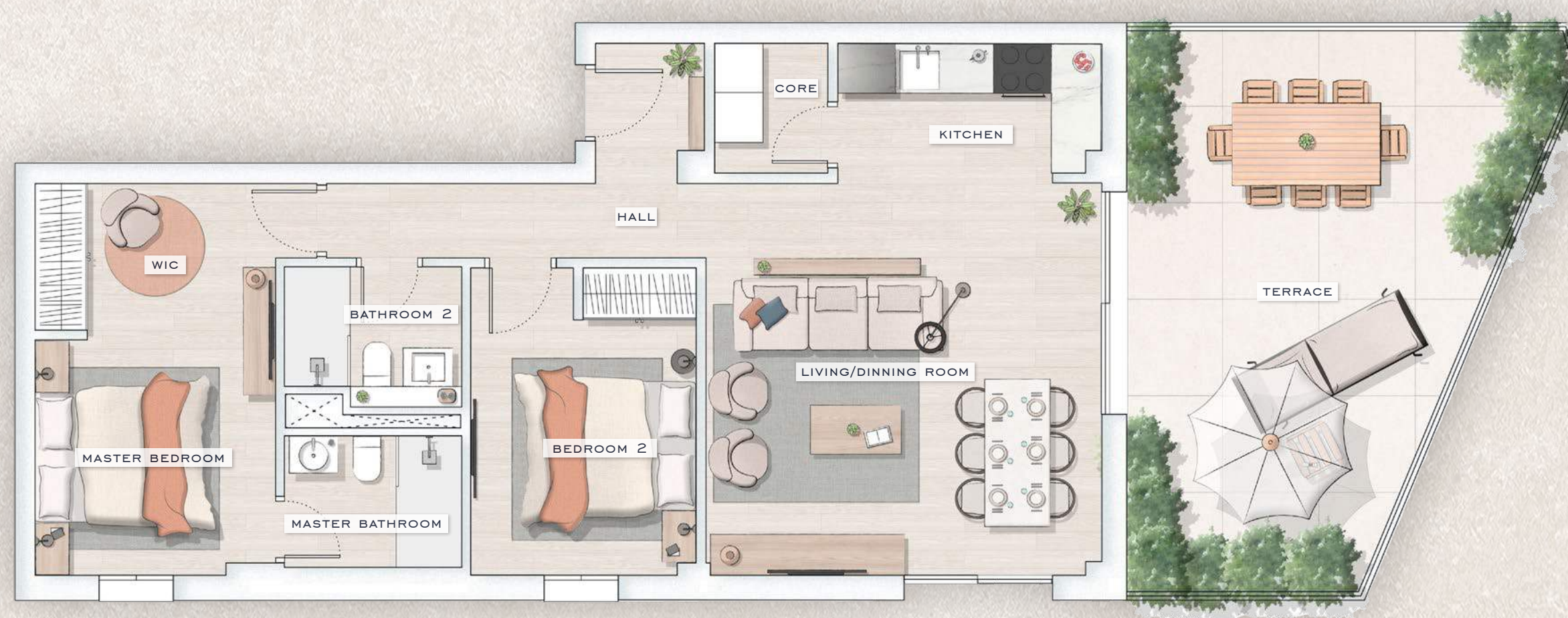
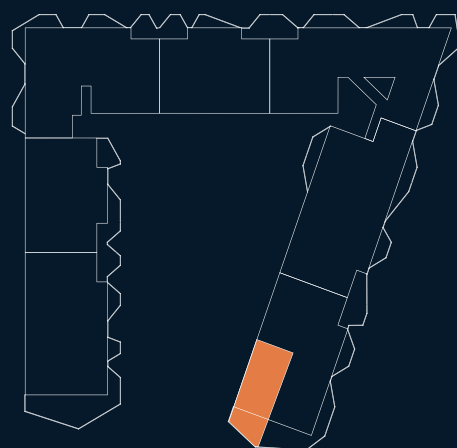
T Y P O L O G I E S

02 bed ELITE Terrace

S U R F A C E S

Built area 92, 01 m²
Built terrace area 30, 52 m²

Total built area 122, 53 m²



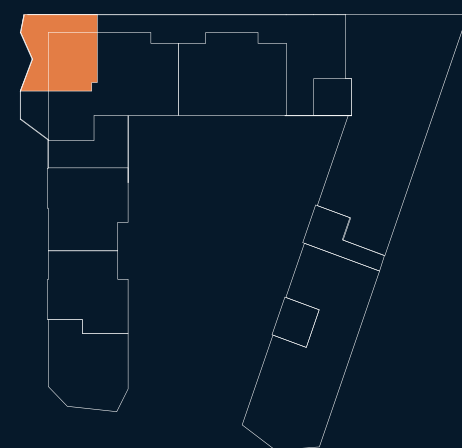
T Y P O L O G I E S

02 bed GARDEN Living

S U R F A C E S

Built area 125, 81 m²
Built terrace area 97, 41 m²

Total built area 223, 22 m²



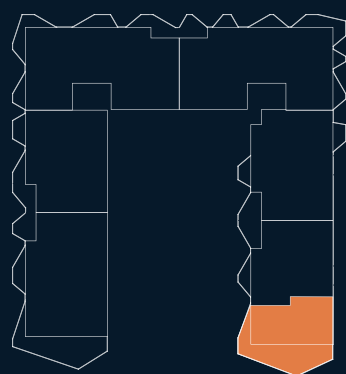
TYPES

03 bed GRAN Terrace

SURFACES

Built area 140,80 m²
Built terrace area 99,97 m²

Total built area 240,77 m²



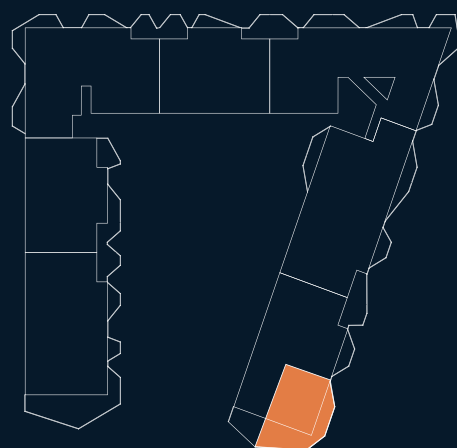
T Y P O L O G I E S

03 bed GRAN Terrace

S U R F A C E S

Built area 118,22 m²
Built terrace area 61,97 m²

Total built area 180,19 m²





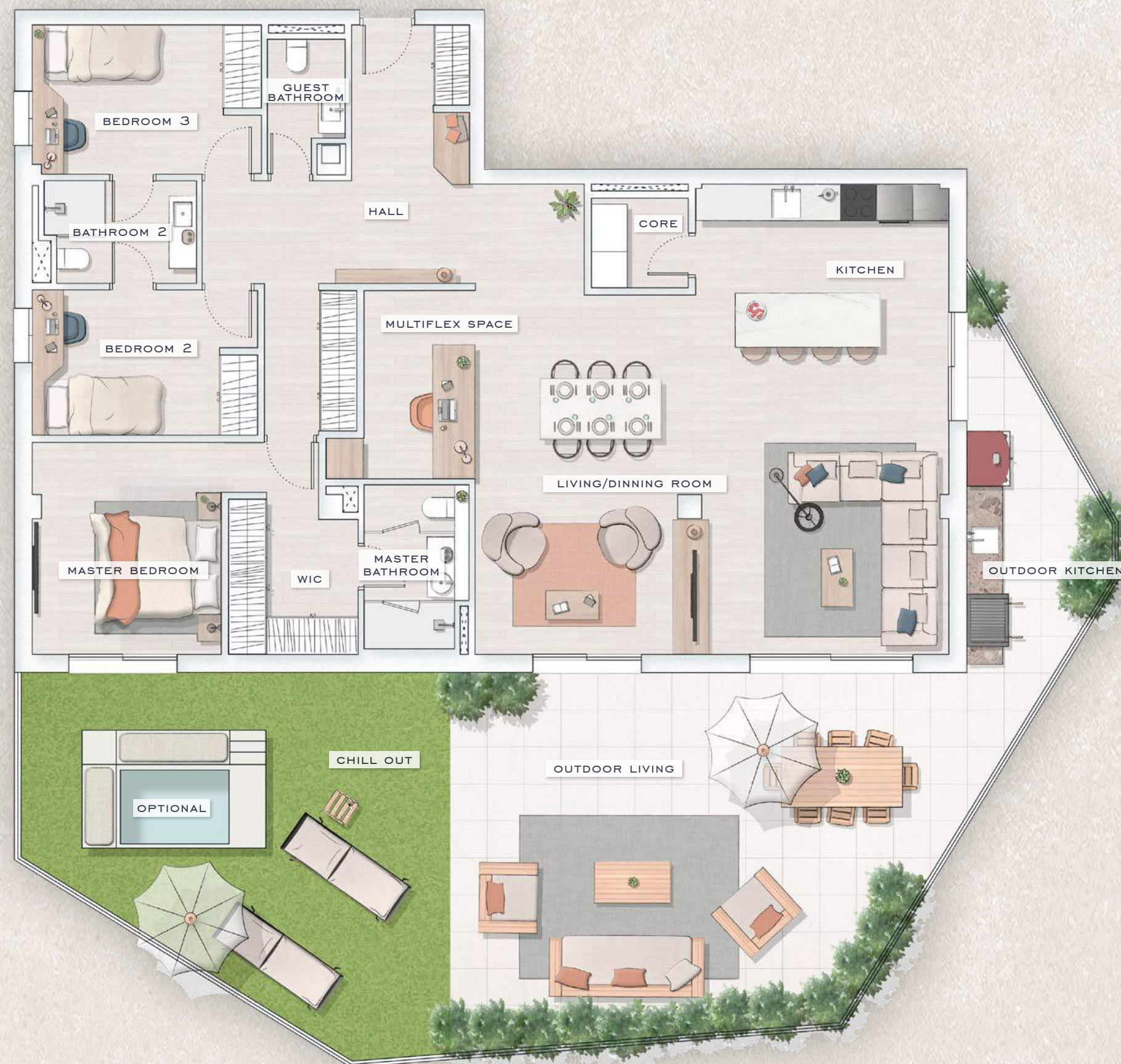
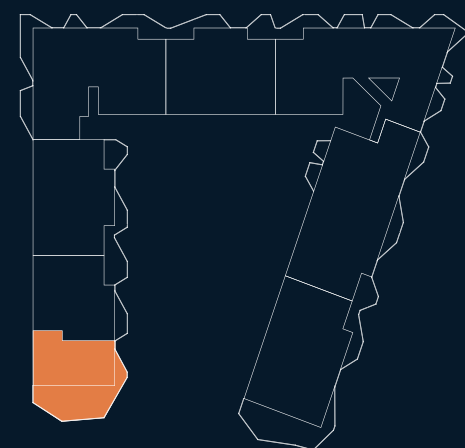
T Y P O L O G I E S

3,5 bed FLEX Grand space

S U R F A C E S

Built area 183, 49 m²
Built terrace area 99, 68 m²

Total built area 283, 17 m²



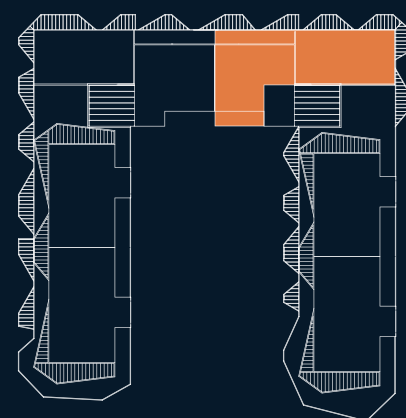
TYPOLOGIES

03 bed GRAND Penthouse

SURFACES

Built area 138, 69 m²
Built terrace area 203, 58 m²

Total built area 342, 27 m²



TYPOLOGIES

4,5 bed GRAND Penthouse

SURFACES

Built area 212, 41 m²
Built terrace area 184, 34 m²

Total built area 396, 75 m²

